

Sierra Meadows Partnership Prioritization Workgroup Update

Marian Vernon

SMP Annual Gathering

May 15, 2019



Point Blue

Conservation science
for a healthy planet

Purpose

- Develop a tool that will provide a strategic, flexible approach for prioritizing meadows for restoration and protection
- Point Blue secured funding from the SNC in 2018 to develop the tool by October 2019

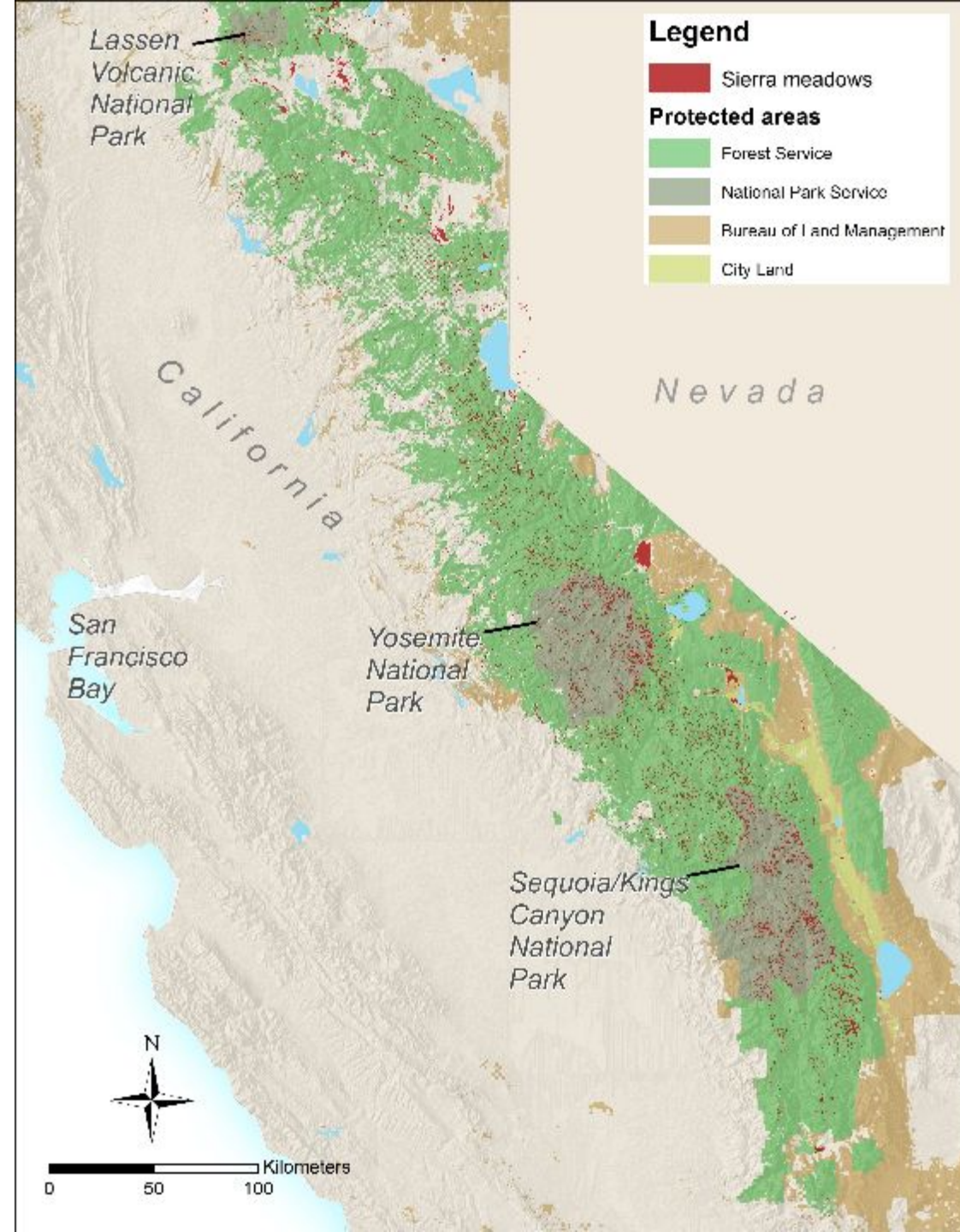
Sierra Meadows Strategy

An "all-hands, all-lands" approach to increasing the pace, scale and efficacy of meadow restoration and protection throughout the Greater Sierra Nevada.



Tool Overview

- Strategic, flexible approach for prioritizing meadows
- Comprehensive database of the distribution of conservation values
- Increase the pace, scale, and efficacy of meadow restoration to reach the SMP's goal
- Achieve multiple benefits: biodiversity, water, carbon storage, and climate resiliency



Prioritization Work Group Core Members

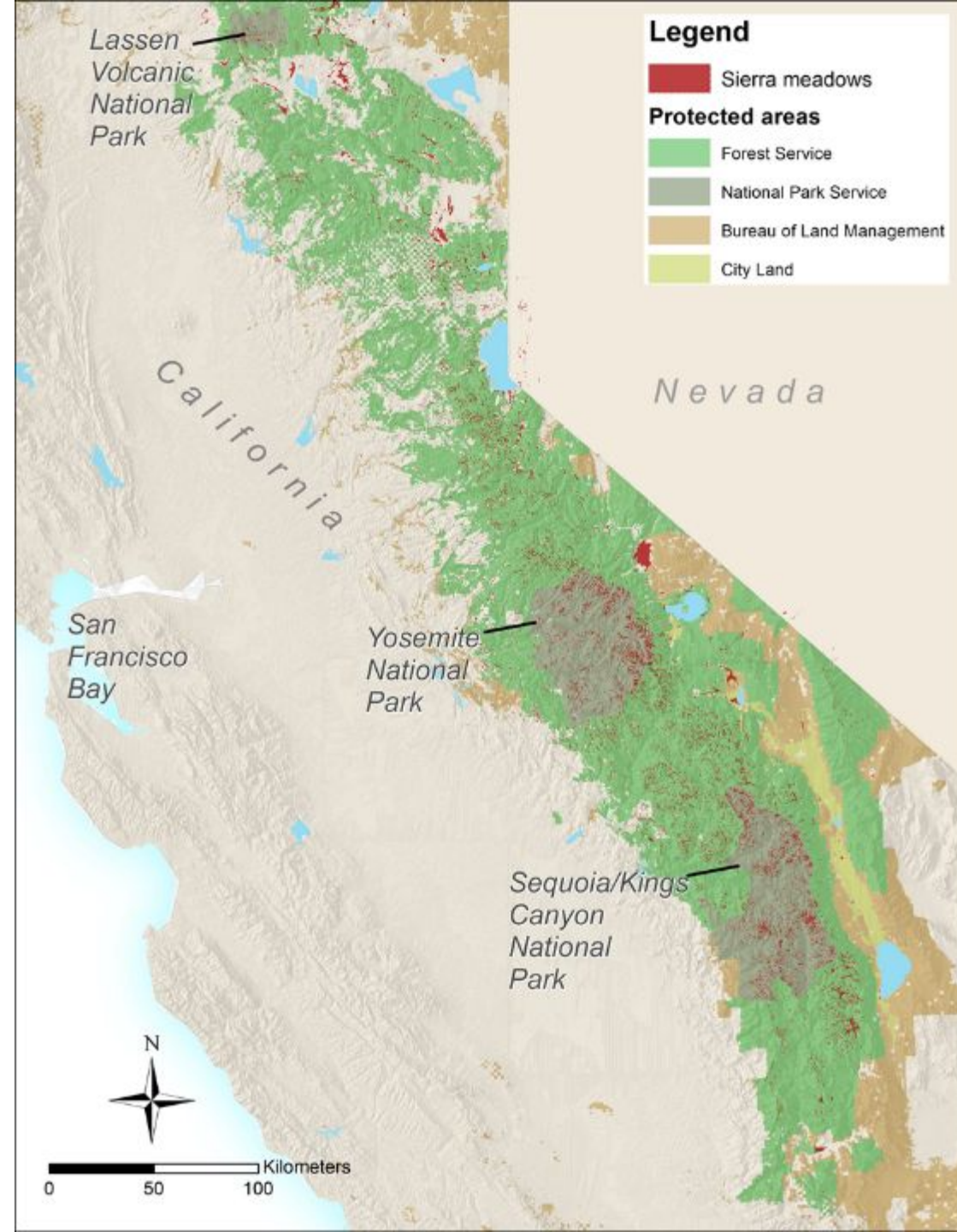
- Marian Vernon, Point Blue Conservation Science
- Rene Henery, Trout Unlimited
- Jill-Marie Seymour, U.S. Fish and Wildlife Service
- Kristen Wilson, The Nature Conservancy

Current Project Status

- Prioritization tool database and draft user guide are COMPLETE!
- Next step is to get it online
- Working with UC Davis Center for Watershed Sciences to create tool interface through the Meadows Clearinghouse website
- Target date for tool to go live is October 2019

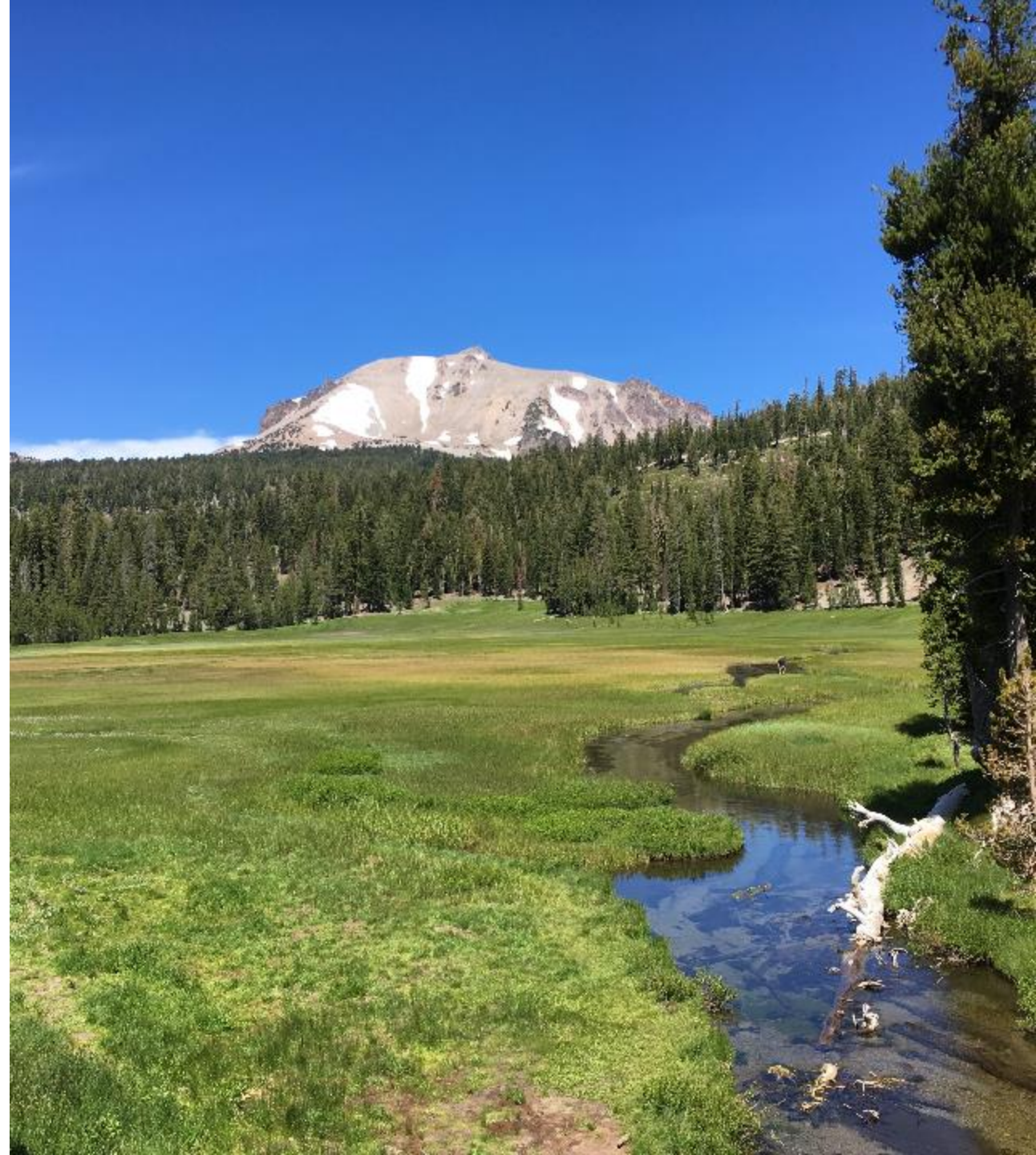
How it will work

- User selects the desired scale/region of interest as well as their priority conservation targets
- Tool will provide .csv spreadsheet for each conservation target with data for the meadows in selected region to inform decision-making
- Consult user guide for information on data sources, suggested scoring, and how to use the data in decision-making



Tool Conceptual Model

- Ecosystem Targets
 - Carbon Storage
 - Climate Vulnerability
 - Climate Refugia
 - Hydrological Importance
 - Landscape-Level Significance
 - Water Quality
- Biodiversity Targets
 - Target amphibian, bird, and fish species
- Meadow climate decision framework



Preliminary Results

- Used the tool and AR Scorecard meadow condition data to prioritize 90 meadows for restoration in Lassen National Forest
- Used the tool to prioritize 70 privately owned meadows for a strategic conservation assessment with Feather River LT



How to get involved

- Assist with tool sensitivity and data validation
- Pilot tool for meadow prioritization processes
- Provide feedback on tool utility, sensitivity, validation



Thank You and Q&A

Marian Vernon,
mvernon@pointblue.org

Special thanks to the Sierra
Nevada Conservancy for
funding this work.